

# LEDinspect TWIST250

## Inspectionlights



### Multi-Angle Flex & Twist

High flexibility and diverse adjustment possibilities thanks to multi angle positioning



### 250 Lumen

2 light functions: Up to 250lm -high Up to 125lm -low



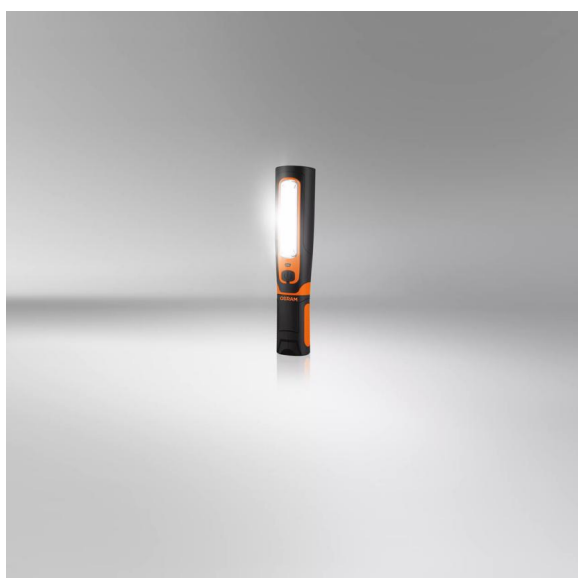
### 2in1

Inspectionlight & Torchlight function



### 2-year-OSRAM guarantee\*

Systematic quality assurance measures underpin the premium workmanship and functionality of our products. Innovative technology and excellent quality really pay dividends for our customers.



### Light is versatile

With the TWIST 250 you have the possibility to easily control the direction of the light beam. A light output of up to 250 lumens and a colour temperature of up to 6000K, make the TWIST 250 ideal for use in workshops and beyond. Lightweight, robust and with a 360° rotation and a 180° grid function, it is an optimal tool for targeted lighting. Mains charger included. In addition, OSRAM provides a 2-year guarantee on this product\*

Product family datasheet

Technical data

|                     | Product information   | General Product Information | Electrical Data  |                                      |
|---------------------|---|-----------------------------|--|--------------------------------------|
| Product description | Application (Category and Product specific)   | Global order reference      | Nominal wattage  | Nominal voltage                      |
| INSPECTION LAMP     | LED inspection lights   | LEDIL412                    | 8 W  | 3.7 V                                |
|                     | Photometric Data  |                             |  | Physical Attributes & Dimensions     |
| Product description | Color temperature   | Nominal luminous flux       | Light color LED  | Product weight                       |
| INSPECTION LAMP     | 6000 K  | 250 lm                      | White  | 488.00 g                             |
|                     |   |                             |  | LED module information               |
| Product description | Length  | Width                       | Height   | Number of LEDs per module            |
| INSPECTION LAMP     | 243.0 mm  | 50.0 mm                     | 44.0 mm  | 2                                    |
|                     | Colors & materials  | Lifetime Data               | Additional product data  |                                      |
| Product description | Base color  | Guarantee                   | Type of Battery  | Number of included batteries         |
| INSPECTION LAMP     | Black / Orange  | 2 years                     | Rechargeable   | 1                                    |
|                     |   | Capabilities                | Certificates & standards   | Logistical data                      |
| Product description | Scope of battery  | Technology                  | IK Class   | Watt hour per battery                |
| INSPECTION LAMP     | Yes   | LED                         | IK09   | 8.14                                 |
|                     | Environmental & Regulatory Information<br>Information according Art. 33 of EU Regulation (EC) 1907/2006 (REACH) |                             |  |                                      |
| Product description | Candidate list substance 1  | CAS No. of substance 1      | Safe use instruction   | Declaration no. in SCIP database     |
| INSPECTION LAMP     | Lead  | 7439-92-1                   | The identification of the Candidate List substance is sufficient to allow safe use of the article. | c20eb463-09bd-4c1e-8bd5-69238c3db62e |

Download Data

| File  |   |
|---|---|
|  | User instruction<br>LEDinspect TWIST 250                  |
|  | User instruction<br>GPRS_Safety symbols instructions      |
|  | Movie application<br>LEDinspect Inspection Lights Trailer |

Legal advice

Application advice:

For more detailed application information and graphics please see product datasheet and user instruction.\*for precise conditions please refer to:

[www.osram.com/am-guarantee](http://www.osram.com/am-guarantee)

Application advice

For more detailed application information and graphics please see product datasheet.

Disclaimer

Subject to change without notice. Errors and omission excepted. Always make sure to use the most recent release.