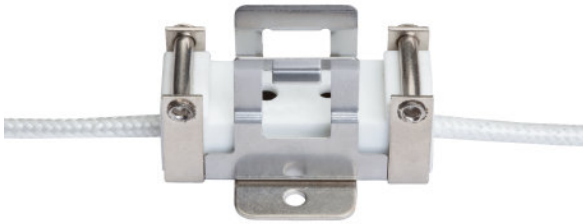


## TP23H 12IN/16GA/UL5359



### Product features and benefits

- Ceramic housings designed specifically for high temperature halogen and metal halide applications
- High quality contact materials for optimal mechanical and electrical properties
- UL recognized and CE certified

### Areas of application

- Halogen Fixtures
- Metal Halide Fixtures
- Halogen Instrumentation
- Halogen Equipment

## Product datasheet

---

### Technical data

#### General product information

Product Number	69020
Product Name	TP23H12IN16GAUL5359 100/CS 100/SKU
Ordering Abbreviation	TP23H 12IN/16GA/UL5359
Brand Name	OSRAM
General Description	TP23H, lampholder, socket

#### Electrical data

Maximum Wattage (W)	1200 W
Maximum Voltage (V)	250 V

#### Physical attributes

Body Material	Ceramic Steatite / Nickel Plated Steel
Contact Material	Nickel Alloy
Wire Type	UL 5359
Wire Gauge (AWG)	16 AWG

#### Additional product data

Lamp Base Reference	GY9.5, GZ9.5
Maximum Operating Temperature (°C)	200 C
Rohs Compliant	Yes

---

### Packaging Information

Product number	EAN/UPC	Packaging	Quantity	Outside dimensions l x w x h	Gross weight
69020	4052899513358	Shipping box (Case)	20	10.1 in x 7.4 in x 2.4 in	2.3 lb

The mentioned product code describes the smallest quantity unit which can be ordered. One shipping unit can contain one or more single products. When placing an order, for the quantity please enter single or multiples of a shipping unit.

---

### Disclaimer

OSRAM does not accept liability for errors, changes and omissions.