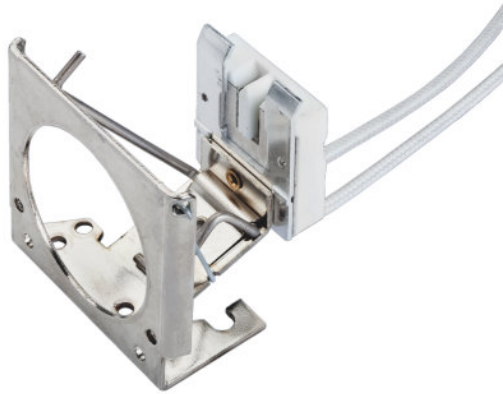


R1DLRIMMT12IN18GAULSFF1 100/CS 20/SKU



Product features and benefits

- Ceramic housings designed specifically for high temperature halogen and metal halide applications
- High quality contact materials for optimal mechanical and electrical properties
- UL recognized and CE certified

Areas of application

- Halogen Fixtures
- Metal Halide Fixtures
- Halogen Instrumentation
- Halogen Equipment

Product datasheet

Technical data

General product information

Product Number	69786
Product Name	R1DLRIMMT12IN18GAULSFF1 100/CS 20/SKU
Ordering Abbreviation	R1DLRIMMT12IN18GAULSFF1 100/CS 20/SKU
Brand Name	OSRAM
CSA File No.	LR20904

Electrical data

Maximum Wattage (W)	500 W
Maximum Voltage (V)	120 V

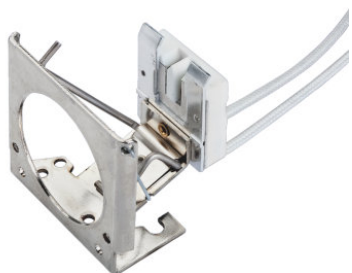
Physical attributes

Length (in)	2.27 in
Length (mm)	57.6 mm
Width (in)	2.17 in
Width (mm)	55.1 mm
Height (in)	1.5 in
Height (mm)	38.1 mm
Body Material	Ceramic Steatite
Contact Material	Silver Plated Brass
Wire Type	SFF1
Wire Gauge (AWG)	18 AWG
Wire Color(s)	WHITE
Lead Length (in)	12 in
Lead Length (mm)	305 mm
Lead Strip Length (in)	0.375 in
Lead Strip Length (mm)	9 mm

Additional product data

Lamp Base Reference	G5.3
Maximum Operating Temperature (°C)	150 C
Rohs Compliant	Yes
Underwriters Laboratories File No.	E31557

Product datasheet



729092_Lampholder R1DL RIM MOUNT

Packaging Information

Product number	EAN/UPC	Packaging	Quantity	Outside dimensions l x w x h	Gross weight
69786	0046135697869	Shipping box (Case)	20	11.2 in x 8.9 in x 3.6 in	3.4 lb

The mentioned product code describes the smallest quantity unit which can be ordered. One shipping unit can contain one or more single products. When placing an order, for the quantity please enter single or multiples of a shipping unit.

Disclaimer

OSRAM does not accept liability for errors, changes and omissions.