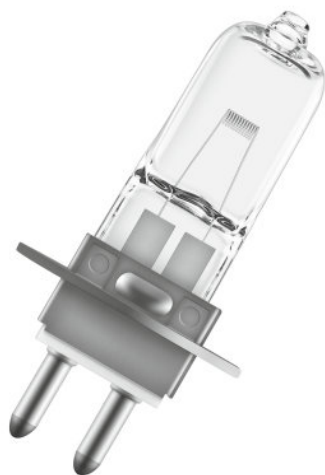


64251 HLX 20W 6V 30/CS 1/SKU



Product features and benefits

- Precise filament alignment with patented quartz pinch technology
- OSRAM HLX lamps provide 10% higher luminous efficacy over standard halogen
- Instant on and nearly constant luminous flux over the life of the lamp
- Dimmable

Areas of application

- Microscopy
- Laboratory & Analysis
- UV Curing
- Fiber Illumination
- Surgical & Dental Overhead
- Club & Disco

Product datasheet

Technical data

General product information

Product Number	54021
Product Name	64251 HLX 20W 6V 30/CS 1/SKU
Family Brand Name	XENOPHOT (HLX)
Application	Projector

Electrical data

Nominal Wattage	20 W
Nominal Voltage	6 V
Type of Current	AC

Light technical data

Average Rated Life	100 h
--------------------	-------

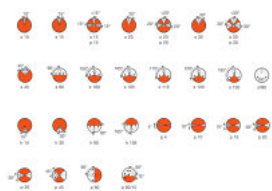
Physical attributes

Base	PG22
Maximum Overall Length (in)	1.560 in
Maximum Overall Length (mm)	40 mm
Length l (in)	1.560 in
Length l (mm)	40 mm
Diameter d (in)	0.354 in
Diameter d (mm)	9.00 mm
Distance a (in)	0.546 in
Distance a (mm)	14 mm
Filament Dimensions Length (in)	0.0310 in
Filament Dimensions Length (mm)	0.8 mm
Filament Dimensions Width (in)	0.09 in
Filament Dimensions Width (mm)	2.3 mm
Reflector Coating	9.00

Additional product data

Operating Position	Any
Class	C (gas)

Product datasheet



s180

Packaging Information

Product number	EAN/UPC	Packaging	Quantity	Outside dimensions l x w x h	Gross weight
54021	4050300338316	Folding box (SKU)	1	1 in x 0.9 in x 2.8 in	
54021	4050300338330	Shipping box (Case)	30	6.2 in x 3.2 in x 5.2 in	0.7 lb

The mentioned product code describes the smallest quantity unit which can be ordered. One shipping unit can contain one or more single products. When placing an order, for the quantity please enter single or multiples of a shipping unit.

Disclaimer

OSRAM does not accept liability for errors, changes and omissions.